



Eastminster Messenger

Volume 40 Issue 37

November 4, 2024



FROM THE



PASTOR

Hold them close and carry all the learnings forward. Who has invited you, inspired you, and challenged you to go deeper in love and faith? Who was urged you onward on a path of healing, learning, and growing?

Are there people and experiences that well up for you? Maybe, a mentor who sees the God given gifts wonderfully present in you and inspires you to step beyond your fears and limitations, walking alongside you as your heart heals and imagination grows. Maybe, a neighbor who holds views very different from your own, and yet the conversations spark a desire to widen your circle of compassion.

Maybe, a friend who listens deeply with genuine care, strives to put themselves in your shoes, and is also unafraid to tell you the truth and to do so with love.

Maybe it is a physical therapist persisting to encourage you through painful steps of healing to continue inching forward.

Who challenges and inspires you to go deeper?

I look forward to continuing in the sermon series on the Gospel according to Luke with you. May the Spirit lead us all beyond a surface level reading and deeper into the heart of Christ and a living faith His grace makes possible.

Sunday November 10 Luke 5:1-11

Sunday November 17 Luke 6:20-36

Let us follow Jesus. Let us worship God!

Grace and courage, Ryan

Please pray for the following:



Anne Meyers, Barbara Moran, Beth Bailey, Ron Sproatt, Dion & Linda, Pam Doerter, Jo Chaddock, Judy Dahl, Sarah and Ensley, Shanice Johnson, Mical Michel, Peggy Pennington, Pam Coulter, Kim Hale, & Mel Ellsperman.



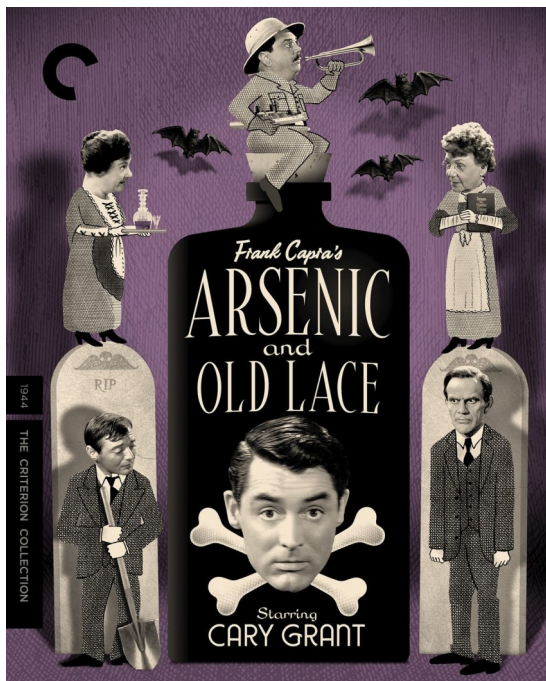
Game Night will be held on Friday, November 22 at 6:00 p.m. Everyone is welcome to attend. Light snacks are provided.



The Starfish Committee is excited to continue to explore an opportunity for EPC clinicians to interact with the congregation and hopefully be a tool to AUGMENT your current healthy living journey and your routine care by your physicians. Although we are unable to provide specific medical advice, several members have skillsets to guide members to resources, and health-related opportunities. At this point, we are unsure what additional specific needs there might be. We started with blood pressure checks several weeks ago and will repeat this **before and after church in the downstairs Sunday School area on Sunday, November 17.** Please feel free to stop by to chat, have your blood pressure assessed, pick up any of the materials we have available or submit ideas for future clinics related to your individual physical and/or mental health care concerns. We hope to prayerfully follow the needs of the congregation and will update you with future dates and opportunities. Let us know what you feel like you need more information about or any resources that we might be able to direct you to!



Classic Movie Night



**Friday, November 8
6 p.m.**

LOVE
never
FAILS



Join EPC Ladies in a fun night of food and fellowship by attending Ladies' Night Out.

It starts at 6:15 p.m. and will meet at Jalisco Mexican Restaurant in Newburgh on Tuesday, November 12. Jalisco has a table dedicated/honoring Jack Chaddock so we hope to sit at that table, but if not, we will visit it and pay homage.

Please let Karla Horrell or the church know you will be attending. Karla 812-476-5641 or Church 812-476-3355



EASTMINSTER PRESBYTERIAN CHURCH

BLOOD DRIVE

Thursday, December 12th

12 - 6 / Fellowship Hall

Walk-ins are most welcome or
schedule your appointment with Brian Bailey